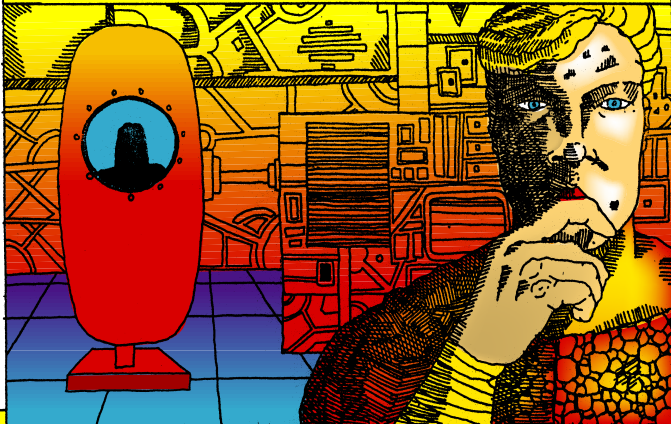
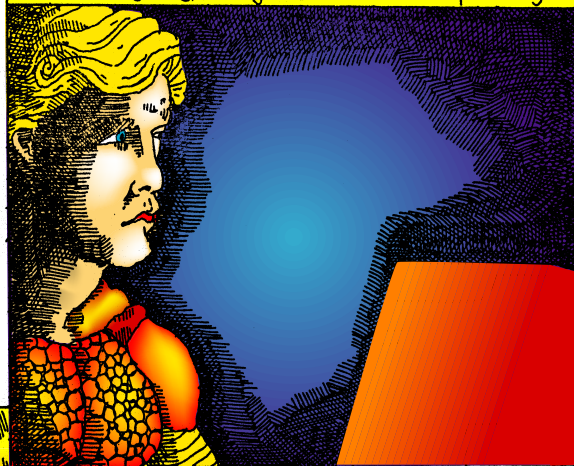


I took her on board my ship and did a full body scan, but something wasn't right. The readings and vitals were not even close to normal.



It was as if she wasn't even human. So I cross-referenced her readings with those of all known humanoid races in this galaxy, but they still didn't match up. Go figure.



Bob's ship had been missing for a week when I came across it. I'm Pete. My job is to search for missing spacecraft investigators...

